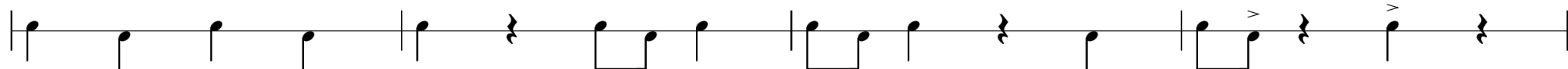
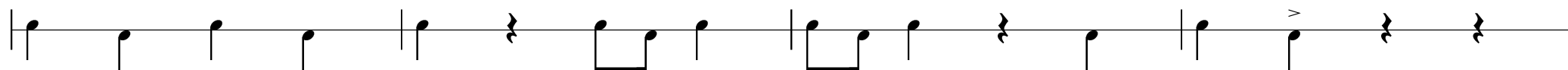
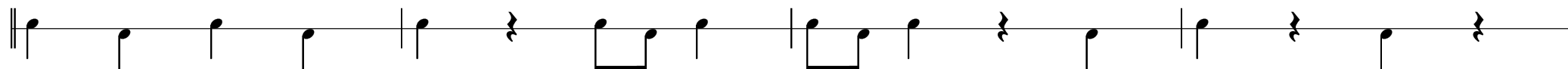


# Hatcher's Return

4/4 March

## Bass

Ed Best

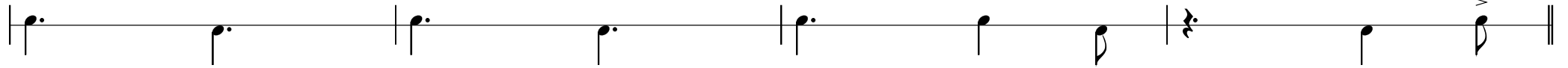
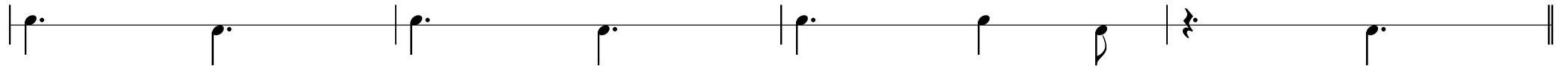
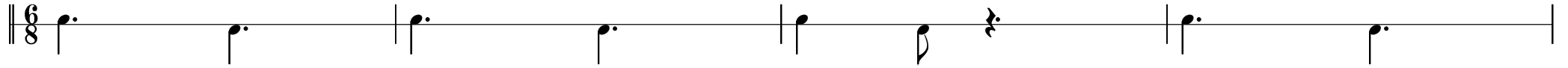


# Hag at the Churn

6/8 Jig

## Bass

Ed Best



# Steam Train

## Bass

Slow Aire

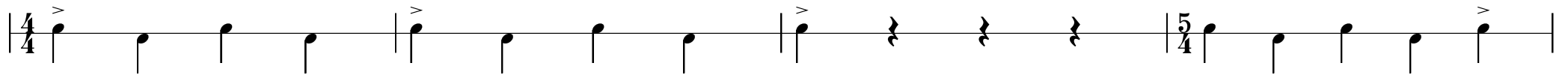
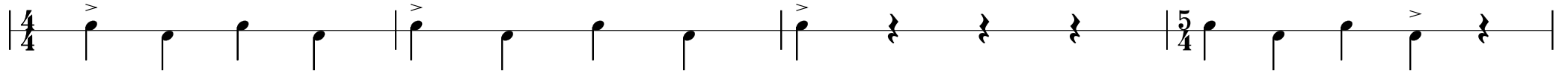
Ed Best

The musical notation consists of two staves. The first staff begins with a treble clef and a 6/8 time signature. It contains six measures of music, each with a single note: a quarter note G4, a quarter note A4, a half note B4, a quarter note C5, a quarter note D5, and a half note E5. The second staff contains six measures of music, each with a single note: a half note F5, a quarter note G5, a quarter note A5, a half note B5, a quarter note C6, and a half note D6. The piece concludes with a double bar line at the end of the second staff.

# Sheol

## Bass

Ed Best



# The Lewis Soldier

Strathspey

## Bass

Ed Best

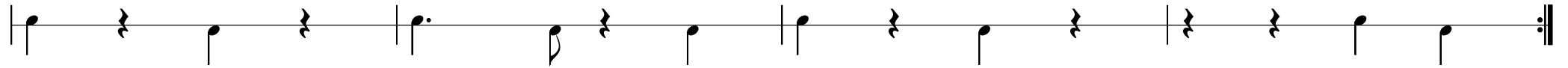
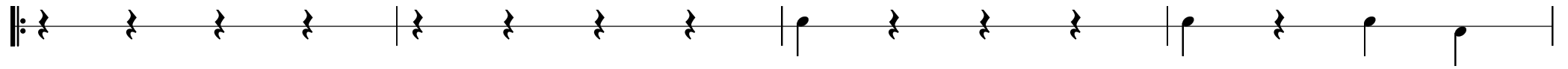
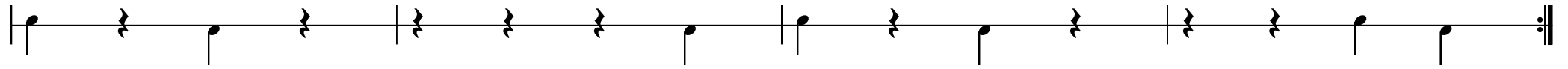
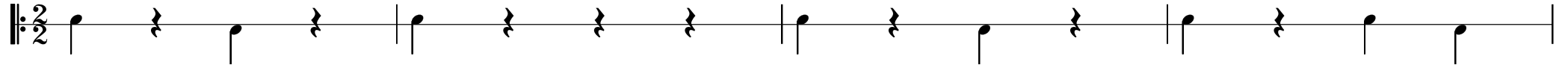
The musical score for the Bass part of 'The Lewis Soldier' is written in 4/4 time. It consists of four staves of music. The first three staves each contain four measures of music. The fourth staff contains four measures, with the first three measures in 4/4 time and the fourth measure in 2/4 time. The notation includes quarter notes, eighth notes, and rests, with accents (>) placed above several notes. A double bar line is present at the end of each staff.

# Silver Spear

Reel

## Bass

Ed Best



# QCJ Medley Ender

## Bass

Ed Best

