

THE SILVER SPEAR

REEL

QCJPD - 2020

A

Musical notation for section A, measures 1-4. The score is in 2/4 time and consists of three staves: SNARE, TENOR, and BASS. The SNARE staff features a complex rhythmic pattern with eighth and sixteenth notes, including accents and slurs. The TENOR staff has a simpler melody with quarter and eighth notes. The BASS staff provides a steady accompaniment with quarter notes.

5

Musical notation for section A, measures 5-8. The SNARE staff continues with its intricate rhythmic pattern. The TENOR staff has a few rests in measures 5 and 7. The BASS staff maintains the accompaniment with quarter notes.

9

B

Musical notation for section B, measures 9-12. The SNARE staff has a more active role with eighth-note patterns. The TENOR staff has a melody with eighth notes. The BASS staff continues with quarter notes.

13

Musical notation for section B, measures 13-16. The SNARE staff features a final flourish with slurs and accents. The TENOR staff has a few rests in measures 13 and 15. The BASS staff concludes the piece with quarter notes.

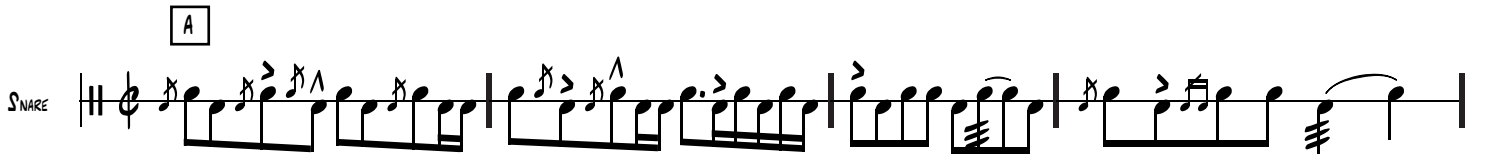
THE SILVER SPEAR

REEL

QCJPD - 2020

A

SNARE

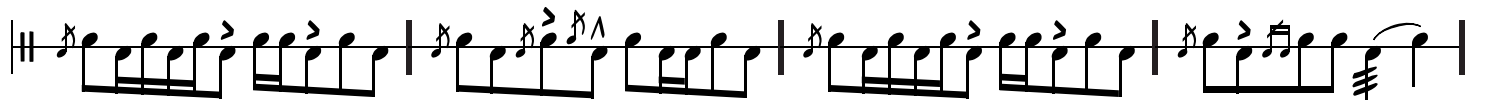


5

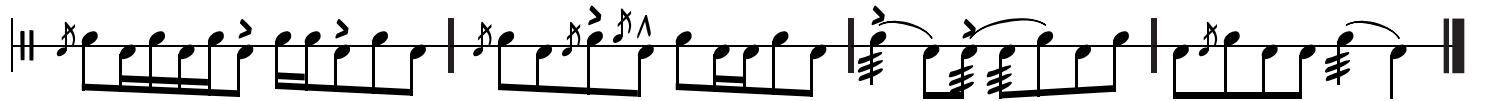


9

B



13



THE SILVER SPEAR

REEL

QCJPD - 2020

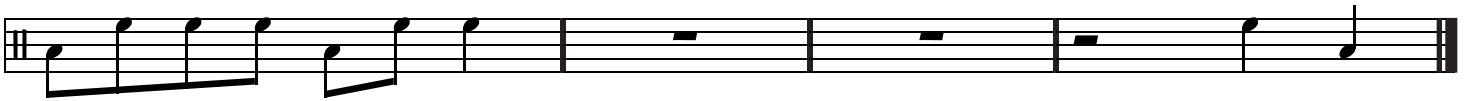
A



9 B



13

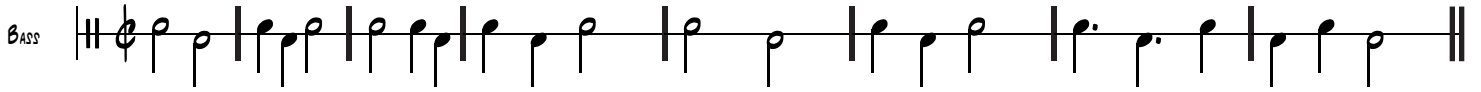


THE SILVER SPEAR

REEL

QCJPD - 2020

A



9 B

